

FROM THE PRESIDENT'S DESK:.....1
LOCAL/REGIONAL NEWS2
 Your DSB:2
 Elections and Nominations.....2
 DSB Hosts Checkoff Tour2
 Delaware Soybean Ambassador.....3
 Delaware Department of Agriculture.....3
BIODIESEL NEWS.....3
 Bioheat3
 Delaware State Fair Burns the Bean3
 Sport Venues Turn to Biodiesel4
 Biodiesel Featured on the Tonight Show4
NATIONAL NEWS.....4
 Soy Ink4
 Meat Exports Help Use Beans4
 Ford Mustang Goes Soy.....4
SOYBEAN RUST UPDATE5
NEWS AFFECTING SOYBEANS AND YOUR
MARKETING REPORT:.....6
 Soy Market Update, Vol. 4, Issue 2: Soybean Market
 News Briefs.....6
 USDA Projects Stronger U.S. Corn Production and
 Ending Stocks6
 Soybeans6
 Wheat6
 Market Strategy7
WISHH UPDATE7
 U.S. High-Protein Soy Heads to Guatemala7
2007 DELAWARE SOYBEAN BOARD ELECTIONS9
ADDRESS CHANGES11

many agricultural boards and efforts, was always willing to lend advice (and a smile) and was a real joy to work with.

Thanks to his efforts, and those of his peers, our soybean checkoff has gone national, and provides the funding and support to launch research, marketing and education programs that are well beyond the reach of us as individual farmers. With checkoff support, soy-based biodiesel has become a success; more than half of our crop goes to export markets that otherwise may never have been open to us; and timely and effective responses to the threat of soybean rust are being formulated.

Today we carry on Olin’s vision and are lucky to have a succession of farmers who are willing to serve – to do the reading, the thinking, the questioning, the showing up, the photo opps, the late meetings and early deadlines – all the things that must be done for the benefit of us all. Tom Unruh and Billy O’Day have completed their two, three-year terms on the Board and we thank them for their service.

In this issue of *Soy News*, we have three nominees who are volunteering on behalf of all soybean farmers to serve as directors on the DSB. Two of them are new to the board; one of them has already served one term and will take over the reins of the Chairmanship from me this fall. I’m grateful to them all for the time they are willing to give.

Good harvesting, Jeff Allen

FROM THE PRESIDENT'S DESK:
Jeffrey Allen, PRESIDENT DSB

Recently, I’ve been reminded of the power that we as individuals bring to our industry through the simple act of volunteering.

We wouldn’t have a Delaware Soybean Board (DSB) without our volunteers. Delaware enacted one of the first soybean checkoffs in the nation, thanks to the efforts of many volunteers, but especially among them Olin Gooden. Mr. Gooden, who passed away in July, volunteered on

LOCAL/REGIONAL NEWS

Your DSB:

The DSB elected officers at its Aug. 13 meeting. The new positions become effective October 1, with the start of the new fiscal year. Matt Webber will succeed Jeff Allen as Chairman of the board while Jeff Allen will succeed Roland Hill as Vice Chairman. Mark Wilson will succeed Matt Webber as Treasurer.

Elections and Nominations

Delaware Soybean Board elections are being held at the present time. The DSB has nominated the following individuals but write-in candidates are welcomed. To represent Sussex County and replace the retiring board member Billy O'Day, the board has nominated Mr. Kevin Evans. Dennis Clay has been nominated in New Castle County to replace Mr. Tom Unruh and in Kent County, Mr. Matt Webber is running for a second term. See enclosed ballot and instructions.

DSB Hosts Checkoff Tour

The DSB hosted a peninsula-wide tour for national soybean checkoff leaders from the United Soybean Board (USB) July 25-27. Visiting the area were Jack Reed of Indiana, Richard Fordyce of Missouri and Chuck Friedrich of South Dakota.



Photo 1. Checkoff tour participants at DE State Fair.

The USB sponsors these tours as a way for directors from different states to get a deeper understanding of issues facing agriculture in other states. The USB consists of 64 farmer directors who direct the national soybean checkoff program. Under this program, one-half of one percent of the

net market value of soybeans is “checked off” at the first point of sale for research, marketing and education. Qualified state soybean boards such as the DSB collect the checkoff from in-state elevators and send half the fund to USB for national and international activities. The remaining half stays in-state to address local opportunities for research, marketing and education.

The USB directors were joined by former USB director from Delaware Doug Corey and current Maryland USB director Geno Lowe the first evening for a quick bus tour of the Perdue Salisbury grain processing facility, followed by a tour of Maryland Biodiesel in Berlin.

The following day, the directors caught up with Bruce Hotchkiss, senior editor of the Delmarva Farmer newspaper, who hosted them on a research tour of the Wye Research and Education Center and Schillinger Seed company on Maryland's Upper Shore (Photo 2).



Photo 2. Above Jack Reed from Indiana is being shown how to tag a pollinated soybean plant by a worker at Schillinger Seed.

The seed farm, site of the cross-pollination which resulted in the first Roundup Ready® beans, gave the directors a firsthand view of the process as workers used tweezers to pry open blossoms and manually pollinate the plants. Delaware Soybean Board members Dallas Wright and Roland Hill joined the tour for the day, as did Maryland Soybean Board (MSB) members Dave Burrier, Bill Malkus, Sid Richardson and Mark Powell (of the Maryland Department of Agriculture).

Afterwards, the directors attended the “Maryland Commodity Classic,” a joint meeting of the Maryland Grain Producers Association and MSB. During the meeting, Hotchkiss was named “Man of the Year” by the association. The Classic ended with its traditional crab feast, during which the directors tried their hand at picking crabs, guided by USB Maryland Director Steve Moore, Wright, Hill, DSB executive Susanne Zilberfarb and Sandy Davis, who is both the MSB executive and DSB Compliance and Financial Coordinator.

The following morning, still smelling faintly of crabs, the directors headed to Mid-Atlantic Biodiesel in Clayton and toured the plant with Marty Ross, USB Director from Delaware. Ross joined the group later for lunch at the State Fair with Del. Secy. of Ag Mike Scuse, DPI’s Connie Parvis, and former DSB executive Melanie Rapp. The directors then visited the offices of the midway vendor, Wade Shows, which was using B20 biodiesel in the carnival power generators. Given some free time, then, to visit the exhibits of their choice at the Fair, the directors visited the livestock barns and equipment displays before meeting Michelle Johnson, DSB intern, and venturing a taste of scrapple.

Their tour ended at Doug Corey’s farm in Bridgeville, where they learned about growing soybeans and watermelons in rotation, and Corey and his family hosted a farewell dinner in their machine shed. DSB Director Jeff Wheatley and DSB nominee Kevin Evans also attended.

Delaware Soybean Ambassador

Michelle Johnson has completed her second year as Soybean Ambassador for the DSB, a

project of DSB and the Delaware Department of Agriculture. Michelle’s hard work this summer was greatly appreciated and the board and staff wishes her the best as she begins college this fall in West Virginia.

Delaware Department of Agriculture

Jo-Ann Walston was recently hired by the Delaware Department of Agriculture as a marketing specialist. She will be working with the commodity checkoff boards, including the DSB. Walston previously had worked for the Delaware Economic Development Office, with a concentration on marketing tourism. The board and staff look forward to working with her.

BIODIESEL NEWS

Bioheat

BIOHEAT home heating oil is made from a blend of biodiesel and generic heating oil. It performs better than regular heating oil by providing cleaner emissions. Bioheat typically uses blends of up to 5% biodiesel in the mixture. Even at this low blend, Bioheat still helps farmers. The heating oil market is a 7 billion gallon market, primarily located in the Northeast. Just a B5 blend moves 350 million gallons of biodiesel. The Delaware Soybean Board has been participating in research and promotions in support of Bioheat. If you heat with oil, ask your fuel provider for Bioheat.

Delaware State Fair Burns the Bean

Wade Shows, the amusements operator for the Delaware State Fair, once again used B20 in its diesel generators which power the carnival rides (Photo 3). The company enjoyed good exposure and excellent performance from the fuel last year. Carl King delivered the fuel. The Delaware Soybean Board provided advertising support for the biodiesel promotion.



Photo 3. Checkoff tour participants looking at the biodiesel banner at the Delaware State Fair.

Sport Venues Turn to Biodiesel

Fans who tuned into the Major League Baseball All-Star Game July 10 watched a broadcast powered by biodiesel. FOX Sports used B20, a blend of 20 percent biodiesel and 80 percent diesel, in all of its generators, satellite trucks and other diesel equipment at its television compound in San Francisco. What's more, the company has committed to using B20 to power its broadcasts of the World Series, Super Bowl, the Bowl Championship Series and other major events.

Biodiesel Featured on the Tonight Show

Tonight Show host and auto expert Jay Leno features biodiesel in a video of his recent meeting with National Biodiesel Board (NBB) CEO Joe Jobe at Jay's garage in California. On his Web site, jaylenosgarage.com, Leno describes his use of biodiesel in his Eco Jet concept car, his motorcycle as well as the New Holland tractor that he uses to move his famous car collection.

NATIONAL NEWS

Soy Ink

Soy ink has been around for 20 years. Introduced in 1987, soy ink provides brighter

colors and less rub-off. Today, more than one-third of all daily newspapers and over 90% of all newspapers use soy-based ink.

Meat Exports Help Use Beans

U. S. meat exports have grown significantly since 1990, and since nearly all of U.S. soybean meal is fed to the U.S. livestock and poultry industry, that's good news for soybean farmers. More than 54 million bushels of soybeans were exported through U.S. red meat exports in 2006, which is a 550 percent increase since 1990. The DSB is working with other checkoff boards in the region to increase public understanding of this important market for soybean meal. The www.thankachicken.com website and new www.thankafarmer.info website both contain interesting and useful statistics and information about the animal agriculture industry.

Ford Mustang Goes Soy

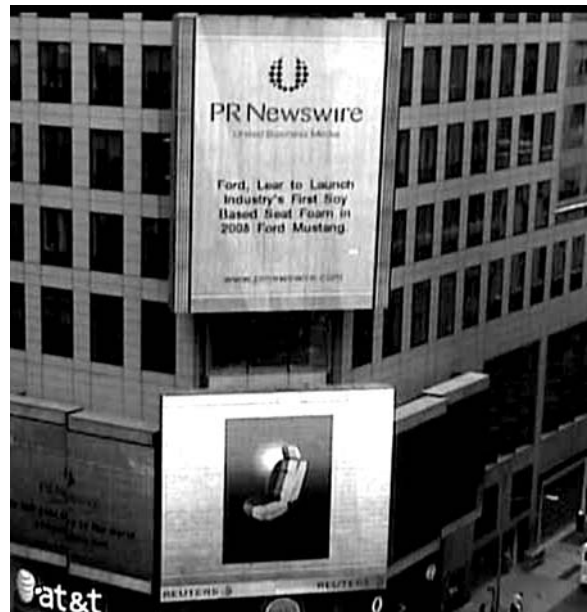


Photo 4. View of Times Square where Ford Motor Company announces the use of soy-based foams in its seeds.

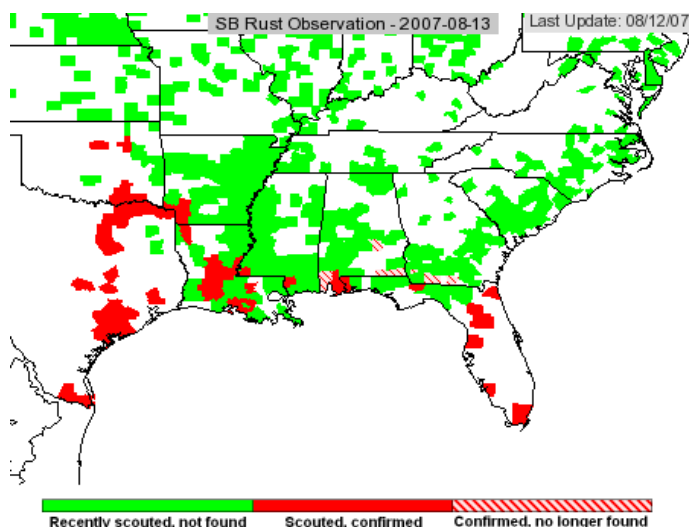
Checkoff support of Ford research yields soy-based seats in 2008 Mustang! Ford Motor Company recently announced that through its partnership with Lear Corporation and initial funding provided by the soybean checkoff, new seats utilizing foam with a 40 percent soy-based polyurethane will be introduced in the 2008 Ford Mustang. The new Mustangs will feature soy-

based flexible foam in the seat backs and seat cushions and are scheduled to roll off the line in August (Photo 4).

SOYBEAN RUST UPDATE

**Bob Mulrooney, Extension Plant Pathologist,
University of Delaware, bobmul@udel.edu**

Hopefully soybean growers have been keeping track of soybean rust through our weekly newsletter, Weekly Crop Update. The current issue and back issues can be found on the web at: <http://ag.udel.edu/extension/wcu/index.htm> On August 11th, Asian soybean rust was reported on soybeans in a sentinel plot in Pearl River County in Mississippi, which is a southern county that borders Louisiana. Rust was also found in Williamson County, Texas at a research station. In 2007, rust has now been reported in 25 counties in Texas (24 soybeans), five counties in Alabama (one soybean), four counties in Arkansas (soybean), 11 counties in Florida (two soybean), five counties in Georgia (all kudzu), 13 parishes in Louisiana (12 soybean), two counties in Mississippi (one soybean), and five counties in Oklahoma (soybean).



Map 1. U.S. county reports of soybean Asian rust.

As you can see from the current map (Map 1), most of the soybean rust activity in the United States is in Louisiana, Texas, Oklahoma, and Arkansas. Besides several counties in the Mobile, Alabama area not much is happening in Florida or Georgia. The weather has been blistering hot, but they are getting showers almost daily. The

extreme heat will prevent or drastically reduce infection and disease development if infections have occurred during more favorable weather for the fungus. For the East Coast, we are a little behind last year's rust development but the western area is ahead of last season in the number of positive soybean rust counties.

Our efforts in Delaware include monitoring our seven sentinel plots located in Georgetown REC, Seaford, Selbyville, Felton, south of Smyrna, Middletown and Newark. The sentinel plots are being checked weekly. One hundred leaves from each plot are collected, incubated for several days and checked under a dissecting microscope for any soybean rust pustules or symptoms that might resemble soybean rust. The plots are planted with two varieties, one a Group III the other a late maturing Group V. The early maturing variety ranges in maturity from R3 to R5. Once these reach R6 or begin to turn, we will sample the late maturing Group V for the rest of the season. We are also monitoring a Syngenta Spore Trap this season which is located at the REC near Georgetown.

Funding for this effort is coming from USDA/APHIS and the Risk Management Agency. We scaled back our monitoring sites after two year's data and learned from that effort that we can do what we need to accomplish with fewer plots but increasing the intensity that we look at these plots. If we need to, we can add more sites later in the season, if conditions warrant it. We want to thank the soybean growers and the DSB again for their support of this effort. This has been a very difficult season for soybean growers and hopefully soybean rust will not be another worry.

Included in this mailing is a tri-fold entitled "Soybean Rust. What is your Risk?" describing the IPM PIPE Website to track soybean rust. It also has the soybean growth stages that are important for timing of sprays and knowing when soybeans are most at risk from rust. If you are a web user, this is a great resource for soybean growers not only for soybean rust but also soybean aphid. If you have any questions or want more information, you can always contact me:

Bob Mulrooney, Extension Plant Pathologist,
University of Delaware, Phone: 302-831-4865,
Plant Clinic 302- 831-1390, or email
bobmul@udel.edu.

NEWS AFFECTING SOYBEANS AND YOUR MARKETING REPORT:

Soy Market Update, Vol. 4, Issue 2: Soybean Market News Briefs

***Carl German, Extension Specialist, Crops
Marketing, University of Delaware,
clgerman@udel.edu***

USDA Projects Stronger U.S. Corn Production and Ending Stocks

USDA's first survey-based forecast for '07 row crop production is now in the books. The August production forecast for U.S. corn was estimated at 13.054 billion bushels, 214 million bushels more than the July estimate and 2.519 billion bushels larger than the '06 harvest. Ending stocks are projected to increase by 14 million bushels, now placed at 1.516 billion bushels. The 214 million bushel increase in the production forecast came from a 2.5 bushel per acre increase in the national average yield, now estimated at 152.8 bushels per acre.

On the demand side, USDA increased the forecasted use for corn in the Feed and Residual category by 50 million bushels and increased the projection for U.S. corn exports in the '07/'08 marketing year by 150 million bushels from the July estimates. The Ethanol for Fuel category was unchanged from a month ago at 3.4 billion bushels, reflecting a 1.250 billion bushel increase from the '06/'07 marketing year. The projected season average U.S. farm price was left unchanged, ranging from \$2.80 to \$3.40 per bushel.

Estimated world ending stocks for corn took a big hit, decreasing 6.13 mmt from last month, now estimated at 102.23 million metric tons. The carry in from the '06/'07 marketing year was 100.20 mmt.

Soybeans

The production forecast for U.S. soybeans was unchanged from a month ago at 2.625 billion bushels. Ending stocks for the '07/'08 marketing year were reduced 25 million bushels from the July estimate attributed to a 25 million bushel decrease in the Beginning Stocks (carry over) from the '06/'07 marketing year. Ending stocks for soybean oil were increased 120 million pounds, now estimated at 2.225 million pounds. Ending stocks for soybean meal were left unchanged at 300 thousand short tons. The projected season average U. S. farm price was unchanged from last month, ranging from \$7.25 to \$8.25 per bushel.

Estimated world ending stocks for soybeans were reduced slightly from the previous month and are projected to be 12.89 mmt less than last year.

Wheat

The production forecast for U.S. wheat production decreased 24 million bushels from a month ago due to a reduction in harvested acreage and yield. U.S. wheat production for the '07/'08 marketing year is now estimated at 2.114 billion bushels, 302 million bushels larger than last year. Ending stocks for U.S. wheat were also reduced 14 million bushels from the previous month and are now estimated at 404 million bushels.

On the demand side less wheat is projected for Feed and Residual use, decreasing by 35 million bushels, now estimated at 180 million bushels. The projection for U.S. wheat exports for the '07/'08 marketing year was increased 25 million bushels, now placed at 1.075 billion bushels. The projected season average farm price was increased 30 cents per bushel

Estimated world ending stocks for wheat were reduced 1.97 million metric tons from last month, now estimated at 114.78 mmt. This is the lowest level for world wheat stocks since the '95/'96 marketing year when wheat futures hit a high of \$7.17 or \$7.50 per bushel, depending upon whose argument one uses for which price constitutes the high. The \$7.50 mark was hit at the Chicago

Board of Trade in thin trading on March 20, 1996 after the contract had expired. Many traders consider \$7.17 per bushel to be the high historical price for wheat, achieved in active trading in April 1996.

Market Strategy

On a recent tour to a portion of the Corn Belt (Illinois) a few observations were made. Corn and soybean crops look good to excellent. The '07 corn crop is made. Whether it rains or not won't make more than one or two bushels difference in the national average corn yield. Early harvest reports are good to excellent. The U.S. should easily hit the 150 bushel national average yield mark (give or take one or two bushels) and the market is likely to trade accordingly into harvest.

The soybean crop needs rain this month for pod and yield development. Since on or before August 1, a large portion of the Corn Belt has been under heat stress and dry conditions. However, the weather may have broken recently with rain occurring and the heat alleviating. Currently, new crop soybean futures are down 32 cents per bushel, trading at \$8.22 per bushel.

New crop corn futures are trading at \$3.37 per bushel, down 8.2 cents per bushel. It is raining on LaSalle Street. If rain occurs and the temperature alleviates over a large portion of the Corn Belt, we could see as much as \$1.00 per bushel taken out of the new crop soybean price within a few trading days. December wheat is trading at \$6.95 per bushel and July '08 wheat is at \$5.82 per bushel.

For technical assistance on making grain marketing decisions, contact the author, Carl German by phone (302-831-1317) or email (clgerman@udel.edu).

Visit the Delaware Soybean Board on the web at www.desoybeans.org

WISHH UPDATE

U.S. High-Protein Soy Heads to Guatemala Will Benefit School Children Who Are Hungry for Food and Education—Karen Edwards, World Initiative for Soy in Human Health karen@kcegroup.com

April 3, 2007...The right food--arriving at the right place at the right time--can literally transform a child's life. Today, the Cargill plant in Cedar Rapids, Iowa is bagging 100 metric tons of textured soy protein (TSP) destined for Guatemalan school children. The shipment has the power to make a long-term difference in the lives of thousands of children who are hungry for food as well as education.

The TSP will be transported approximately 1,800 miles to reach school children in the mountainous central American country through a George McGovern-Robert Dole International Food for Education and Child Nutrition program led by non-profit organization, Food For the Poor (FFP), Inc. FFP's Government Program Specialist Cliff Feldman requested the product from the U.S. Department of Agriculture (USDA) because he has witnessed the difference proper nutrition has made in thousands of children. In his mind, two little Guatemalan girls exemplify the value of proper nutrition, including soy protein.

A group working with FFP found the girls on the verge of death from malnutrition. FFP gave the children milk, sugar and oil to stabilize them before introducing them to a quality-protein diet that included TSP. Today, the girls are not only alive, they are thriving, "They are learning and smart," Feldman says. "Otherwise, they would have been dead."

Soy protein's value to developing countries is exactly why the DSB and other soybean grower organizations support the World Initiative for Soy in Human Health (WISHH) program. Founded in 2000, WISHH has helped develop sustainable protein solutions in 23 countries from Latin America to Asia to Africa.

"WISHH helps introduce high-protein soy to

the fastest growing populations in the world who are eager to have better diets,” says WISHH Executive Director Jim Hershey. “For a few cents per serving, high-protein soy can be added to foods that are already popular with children in developing countries. Soy can be part of the solution for children to grow and learn.”

"Education is the most important ingredient for true growth and maturity of young people in the developing world," Feldman says. "At Food For The Poor, Inc., our experience with extremely impoverished children has taught us that protein in the diet is of great importance in relation



Photo 5 (before) and 6 (after). Alicia, 4, and Leidy, 3, were nursed back to health at children's home in Guatemala with nutritious foods provided by Food For The Poor (FFP) Inc. FFP's Cliff Feldman thanks U.S. soybean growers and others for helping make a long-term difference in children's lives. Photo credit: Food For The Poor

to better learning. Textured soy protein fulfills that protein requirement and the individuals that

we assist enjoy cooking with it and using it as an integral part of their food basket. FFP is proud to be helping Guatemalan children learn and gain dietary wellness, and we thank USDA and the soybean producers for being our partners in this very important work... WISHH, the private voluntary organizations, the farmers; all of us together save lives."

FFP's Guatemala program assists 160,000 school-age children as well as 100,000 preschool children and their mothers (Photo 5 and 6). The TSP Cargill is producing for Guatemala is 52 percent protein. It will add much-needed protein to tortillas, meat analogues and other local foods prepared for school children who rarely have the opportunity to eat meat.

"Cargill is pleased to play a central role in this important work of feeding and educating school children," says Cargill Soy Protein Development Lead Gregg Nelson who also played a key role in the plant producing the nation's first shipment of defatted soy flour under the U.S. Food for Peace program in June 2006. That product went to the West African nation of Burkina Faso.

New Legislation Would Expand International School Feeding

On March 21, a bipartisan group of Members of Congress introduced legislation to reauthorize the George McGovern-Robert Dole International Food for Education and Child Nutrition program. Senators Richard Durbin (D-IL) and Elizabeth Dole (R-NC) along with Representatives Jo Ann Emerson (R-MO) and Jim McGovern (D-MA) introduced the bill to continue the program in fiscal years 2008 to 2012, under the oversight of the U.S. Department of Agriculture. The bill calls for increased funding over five years, beginning with \$140 million in FY 2008 and reaching \$300 million in FY 2012.

Sustainable Long-Term Development is the Goal

The McGovern-Dole program, FFP and WISHH are all focused on long-term sustainable development. For example, FFP is helping create

parent-teacher associations in the communities where it works with school feeding so that the community has the infrastructure and leadership to continue school meal programs. Meanwhile, WISHH provides technical assistance to private voluntary organizations and entrepreneurs that want to use soy.

About WISHH

State soybean grower organizations launched the WISHH Program in 2000. The DSB has approved funding for WISHH for 2008. WISHH is headquartered at the American Soybean Association in St. Louis, and it creates sustainable solutions for the protein demands of people in developing countries through the introduction and use of U.S. soy products. WISHH has worked in 23 countries, ranging from Africa to Asia to Latin America, to improve diets as well as encourage growth of food industries. For more information, please visit: www.wishh.org

Food For The Poor (FFP), the 3rd largest international relief and development organization in the nation, does much more than simply feed the millions of hungry poor in 16 countries of the Caribbean and Latin America. They provide emergency relief assistance, clean water, medicines, educational materials, homes, support for orphans and the aged, skills training and micro-enterprise development assistance, with more than 96% of all donations going directly to programs that help the poor.
<http://www.foodforthe poor.org>

2007 DELAWARE SOYBEAN BOARD ELECTIONS

PURPOSE: The DSB is a nine-member organization comprised of soybean producers from each county. The board oversees and administers a soybean check off program of 0.5 percent of total net market value. Board members volunteer their time during their three-year term to serve as representatives of their fellow soybean producers. Funds are used for research, market development, and educational programs.

Soybean producers in all three counties are eligible to vote in this election. To vote, fill out

the enclosed certification ballot/form and mail to the indicated address before **September 28, 2007**.

One seat is open in each county. To represent Sussex County and replace the retiring board member Billy O'Day, the board has nominated Mr. Kevin Evans. Dennis Clay has been nominated in New Castle County to replace Mr. Tom Unruh and in Kent County Mr. Matt Webber is running for a second term.

Write-in candidates will be accepted.

Who May Vote: Any person who produces soybeans during the current marketing year is eligible to vote. **Producers May Vote Only for Candidates Running in their County of Residence.**

How to Vote: You will be asked to certify that you are a producer of soybeans in Delaware by signing the form at the bottom of the ballot. You will also need to verify your address to certify your vote is tallied according to your county of residence.

New Castle, Kent, and Sussex County producers can vote for 1 (one) candidate each. **ALL VOTING IS CONFIDENTIAL.** After a ballot is certified, the ballot and certification form will be separated and remain confidential. Once certified, only tabulated results will be reported to the Delaware Soybean Board.

BALLOTS MUST BE RETURNED TO THE DEPARTMENT OF AGRICULTURE BY 4:30 p.m. September 28, 2007. The mailing address is as follows.

**Soybean Board Election
Attn: Jo-Ann Walston
DE Dept. of Agriculture
2320 South DuPont Highway
Dover, DE 19901**

S U S S E X C O U N T Y

Select one (1) Board Member:

[] Kevin Evans
9843 Seashore Highway
Bridgeville, DE 19933

[] _____ (Write-in Candidate)

(Name and Address)

CERTIFICATION

I hereby certify that I am a producer of soybeans in the state of Delaware.

Print Name

Signature

Address

County

City/State/Zip

**Return Ballot & Certification Form by Sept. 28 To:
Soybean Board Election
DE Dept. of Agriculture
2320 South DuPont Highway
Dover, DE 19901**

-----fold and tear off here-----

ADDRESS CHANGES

Please send any address corrections or changes to the Editor, Richard Taylor at the Department of Plant and Soil Sciences, 151 Townsend Hall, Newark, DE 19716-2170; or via FAX at 302-831-0605 to the attention of the Soy News Editor; or via an email to the Editor at rtaylor@udel.edu

indicate so in a note to the Editor by U.S. mail, facsimile, or email.

If you know of someone who does not receive the *Soy News* and would like to receive it, please send their name and address to the Editor.

Include your old address and your new address and the effective date of the change.

If you no longer farm soybeans and are not interested in receiving the newsletter, please

AN EQUAL OPPORTUNITY/AFFIRMATIVE ACTION

EMPLOYER - The University of Delaware is committed to assuring equal opportunity to all persons and does not discriminate on the basis of race, color, gender, religion, ancestry, national origin, sexual orientation, veteran status, age, or disability in its educational programs, activities, admissions or employment practices as required by Title IX of the Education Amendments of 1972, Sections 503 and 504 of the Rehabilitation Act of 1973, Titles VI and VII of the Civil Rights Act of 1964, the Americans with Disabilities Act, Executive Orders 11246 and 11375 and other applicable statutes. Inquiries concerning Title IX, Section 503 and 504 compliance, Executive Order 11246 and information regarding campus accessibility and Title VI should be referred to the Affirmative Action Director, 305 Hullahen Hall, 302-831-2835, 302-831-4552 (TDD).

This newsletter was produced in cooperation with the Delaware Soybean Board, Delaware Department of Agriculture, and the University of Delaware.

SOY NEWS, DSB

Richard W. Taylor, Editor
Dept. Plant and Soil Sciences
Univ. of Delaware; 152 Townsend Hall
531 South College Avenue
Newark, DE 19716-2170